



# WESTEC®

Barrier Technologies

*Patented*

## TPER Expansion Board Cap Seal System

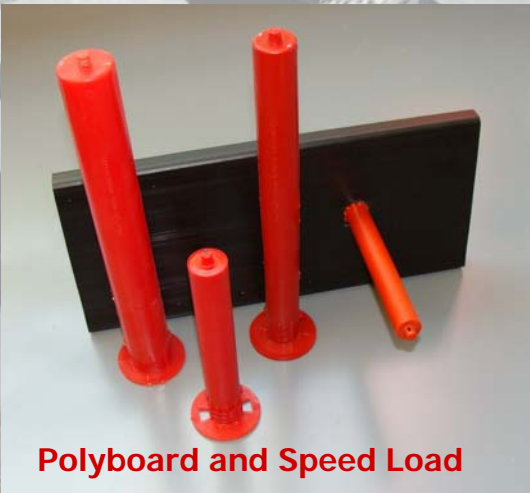


U.S. Patent No. 5,375,386

**The Patented Expansion Board Cap Seal System**, designed by Westec is a complete concrete joint system with a simple installation. The EB Cap System integrates the waterstop, forming system, expansion board, joint seal and load transfer units into a single structure. Just stake down the board, set your screed elevation and that's it. No stripping forms, no messy sealants, no problems.

### Installation Benefits:

- No split formwork
- Fewer installation steps
- No poured-in-place sealant required
- No remobilization for saw cutting or sealant
- Convenient strip pouring possible with Speed Loads
- Lower labor and installation costs
- No joint finishing required



**Polyboard and Speed Load**

### Polyboard

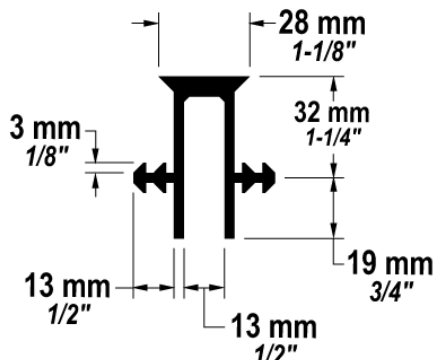
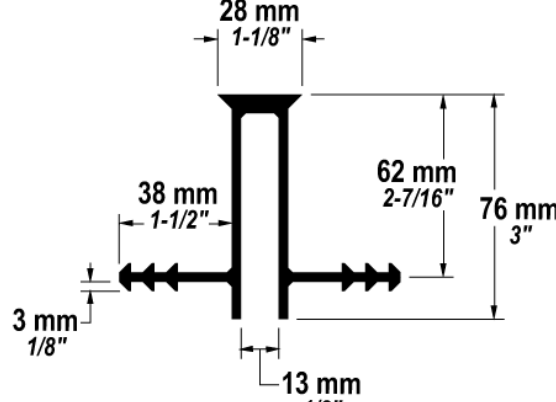
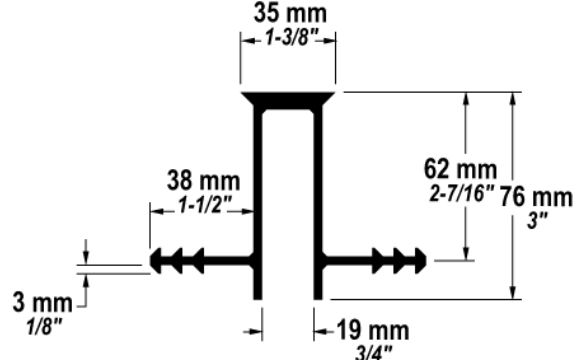
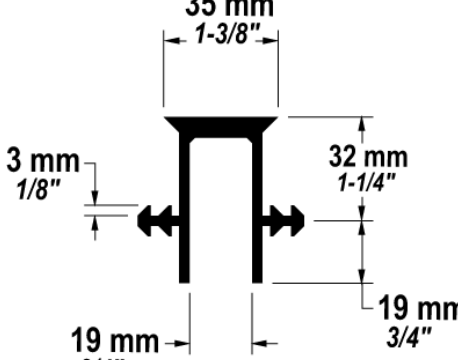
Westec  $\frac{3}{4}$ " HDPE Polyboard is available for 6" and 8" paving applications. Westec  $\frac{1}{2}$ " Polyboard also available in 4'x8' sheets. The polyboard is designed to work with the EB Cap and EB Cap Retrofit profiles and serves as both an expansion material and forming system.

### Speed Load

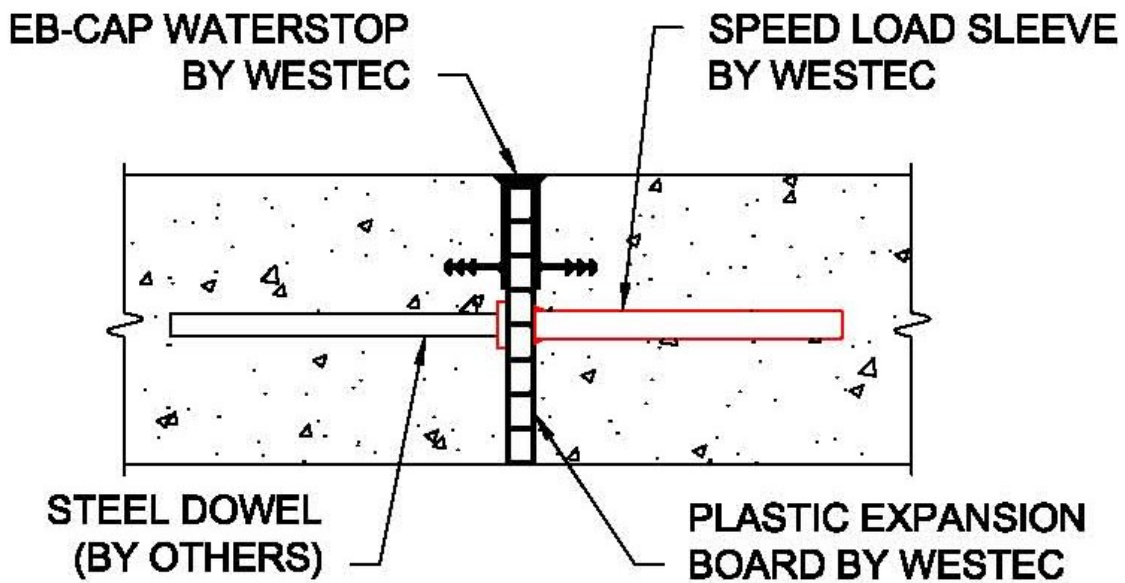
Speed Loads are an excellent addition to the Expansion Board Cap Seal and Polyboard. The Speed Load aligns the steel load transfer dowels, eliminates greasing the dowels and are designed specifically for leave-in-place forming systems like the EB Cap System

3400 Tree Court Industrial Blvd. St. Louis, MO 63122  
(800) 793-7832 or (636) 225-9400 Email: [info@chemstop.com](mailto:info@chemstop.com)

# Standard EB Cap Profiles

No. 634	No. 637
	
No. 638	No. 639
	

## Typical Components for an Expansion Board Cap Seal System



# EB CAP SEAL SYSTEM

## Jobsite Guide

The **WESTEC EB CAP SEAL SYSTEM** is a one step complete concrete joint system.

The EB Cap Seal serves as FORM, WATERSTOP, SEALANT and DOWEL GUIDE in a single installation to create a fluid tight, maintenance-free expansion joint.



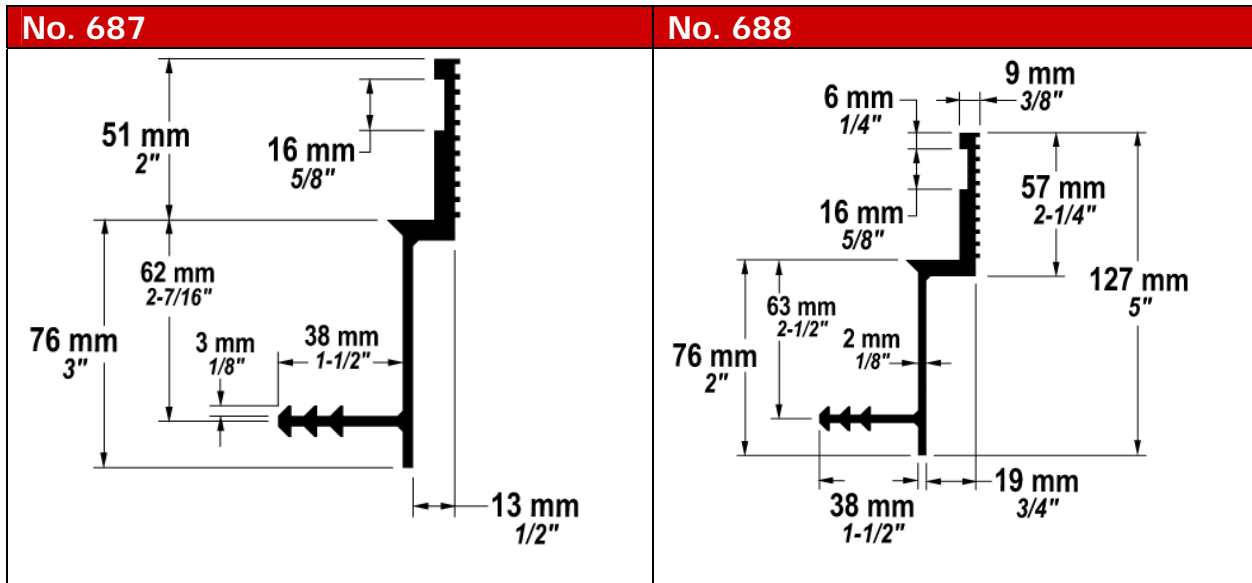
The EB CAP Seal System includes the Waterstop/Cap Seal profile, a HDPE Expansion Board / Form Board and Speed Load Dowel Sleeve.

1. Holes for Speed Load: Drill 1" holes for the 3/4" x 9 Speed Load in HDPE Expansion Board. Consult a Greenstreak Group Engineer for other Speed Load Sizes. Treated Lumber and Plywood may also serve as form and expansion material, however typical expansion joint materials (foam, fiber, etc..) are not rigid enough and should not be used without external support.
2. Tap Speed Load Sleeves through Expansion Board. (rubber mallet works well)
3. Stake Expansion Board (EB) at regular intervals, Stakes should be 3" below Top of Slab (TOS) elevation. Board can be secured with wood screws or ring shank nails.
4. Leave 1/8" between board ends to allow for any possible thermal expansion
5. Weld EB Cap Seal waterstop according to Westec TPER/PE Splicing Guide directions. Use prefabricated fittings for all intersections and direction changes.

**NOTE: Welding process will create a bead of material around the ends of the cap.) This bead must be removed from the inside of cap in order for the EB Cap to sit flush on the Expansion Board. (pliers work well for this) The Weld Bead on the top of the cap must also be removed or smoothed with the iron to avoid catching the screed during concrete placement and finishing.**

6. Place EB Cap profile on Expansion Board and secure cap to board with Nails or screws through the tabs **BELOW** the waterstop ribs. **No penetrations are allowed through the top or sides of the waterstop above the ribs.**
7. Pour concrete normally and use top of EB Cap as screed guide and finish concrete normally.

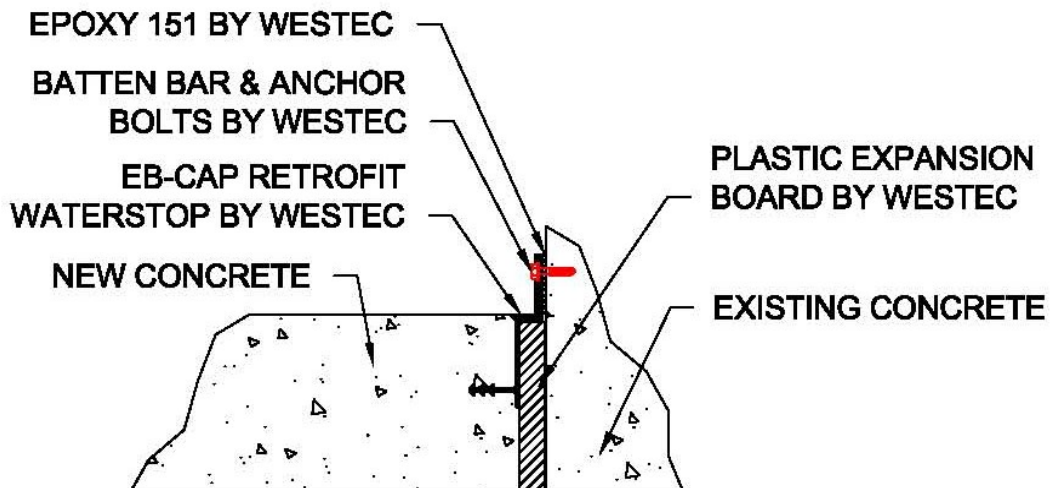
# Retrofit EB Cap Profiles



The 687 and 688 waterstops were designed to allow placement of the waterstop over an expansion joint. Excellent for retrofitting around tank foundation or pump pads, or wherever an isolation joint is required.

The 687 and 688 can be fabricated with the 638 EB Cap seal for new construction.

Westec 687 and 688 profiles are ideal for both circular and angled tank foundations. The profiles can curve around tanks as small as 15' in diameter without special miter cuts.



3400 Tree Court Industrial Blvd. St. Louis, MO 63122  
 (800) 793-7832 or (636) 225-9400 Email:  
[info@chemstop.com](mailto:info@chemstop.com)



GREENSTREAK GROUP, INC.  
 A Family of Construction Companies